

GLOBAL MASK IS A COMPANY WHICH SPECIALISES IN THE DESIGN AND SALE OF RUBBER PARTS FOR ALL TYPES OF INDUSTRY USES AND APPLICATIONS.

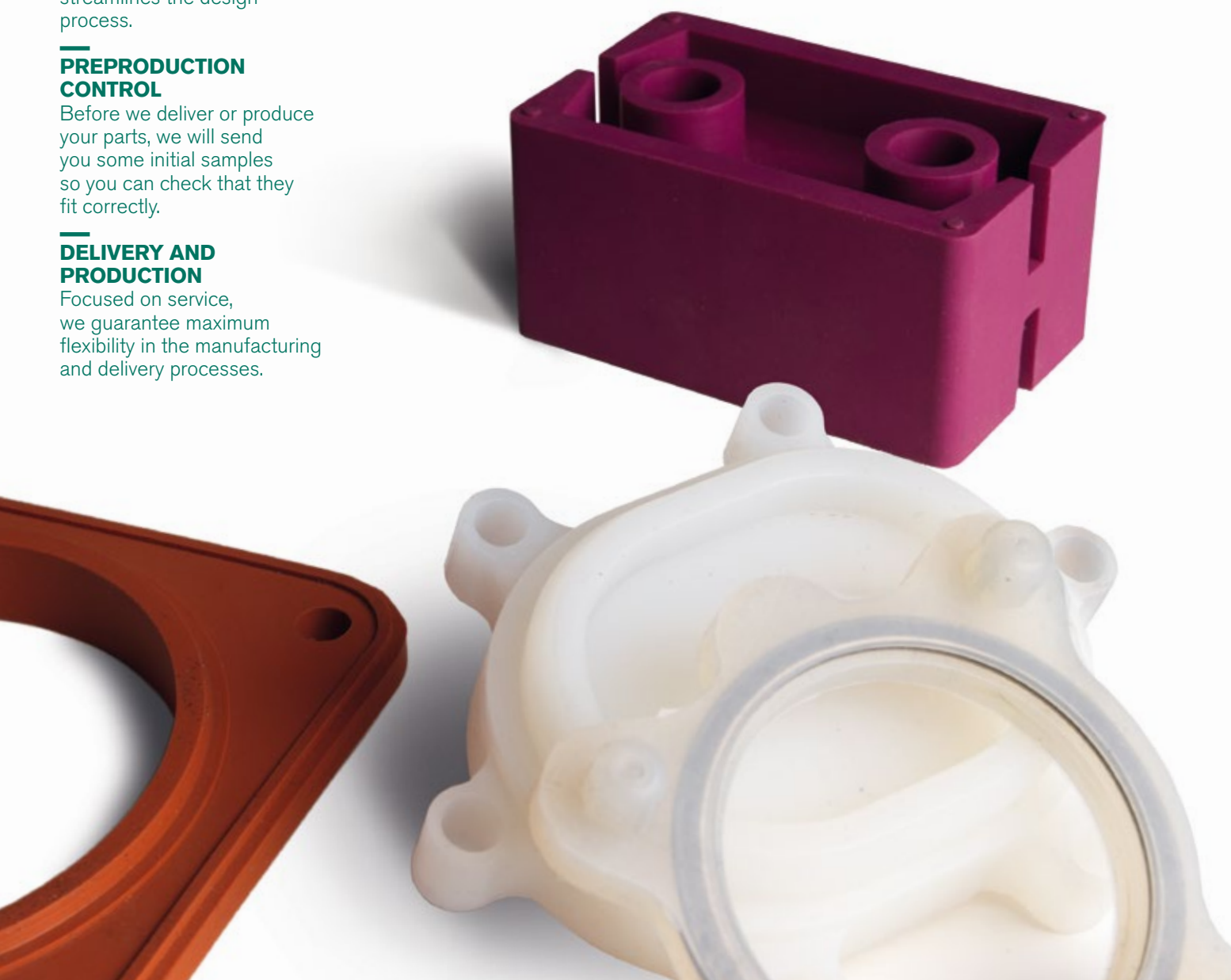
WE ANALYSE YOUR NEEDS
We look for the standard part type that best meets your needs or we will design a part specifically for you.

WE CHOOSE THE BEST MATERIAL
Based on the functional and economic requirements, we will help you choose the most suitable material.

PROTOTYPE DESIGN
Using 3D technology streamlines the design process.

PREPRODUCTION CONTROL
Before we deliver or produce your parts, we will send you some initial samples so you can check that they fit correctly.

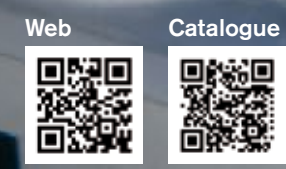
DELIVERY AND PRODUCTION
Focused on service, we guarantee maximum flexibility in the manufacturing and delivery processes.



CUSTOM MASKING SOLUTIONS



Global Mask International, SL
info@global-mask.com
www.global-mask.com



BESPOKE PARTS

Global Mask has a solid internal design department, which offers optimum solutions for every specific usage need.

THE BENEFITS OF BESPOKE PARTS

Made-to-measure parts are designed according to the process and the requirements of your application. Their multiple benefits contribute to greater and improved productivity.



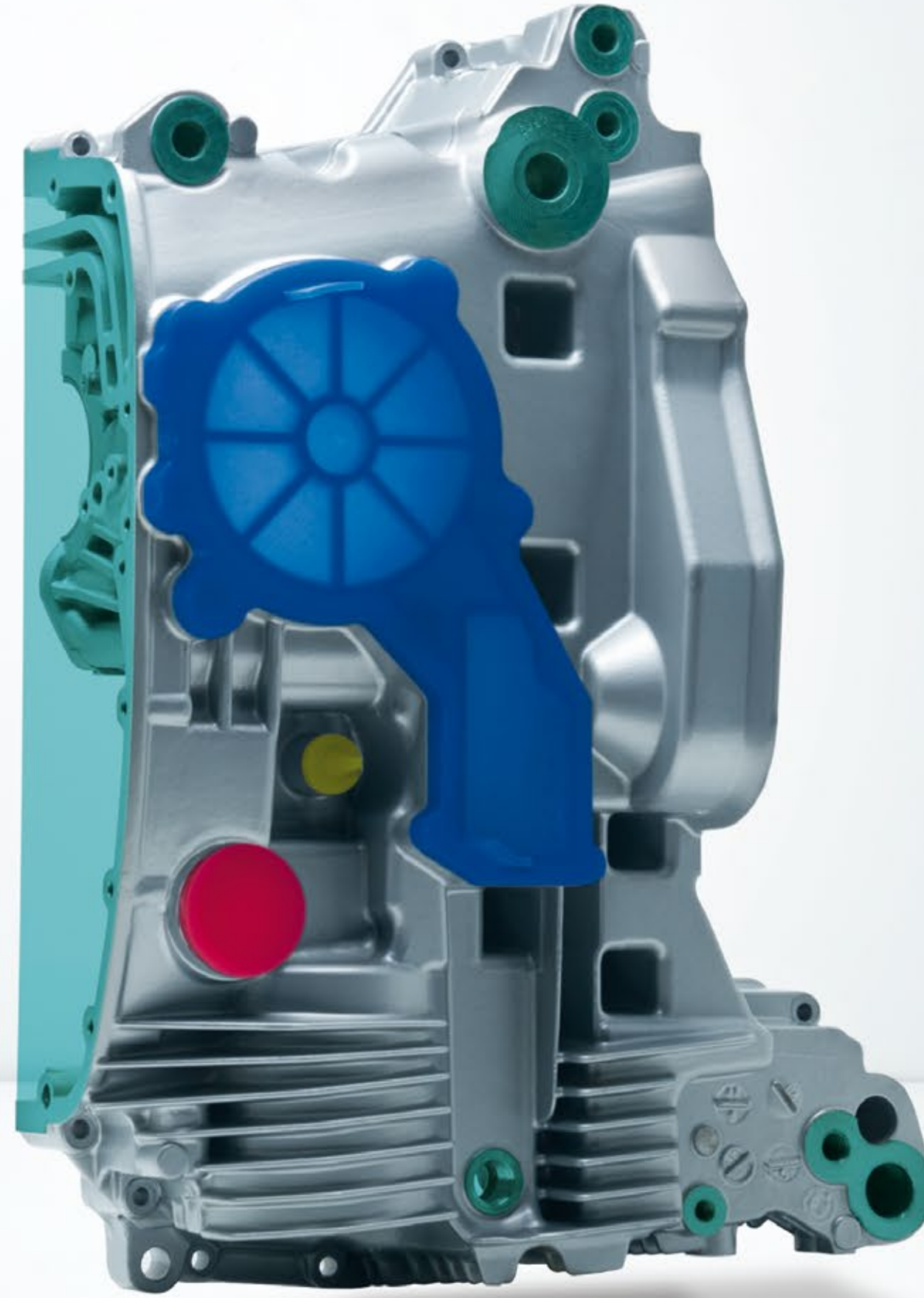
Bespoke shape and size adhesive masks



Special stoppers and caps



Bespoke lids and protections



BESPOKE DESIGN PROCESS OF MASKING PARTS FOR COATING INDUSTRIES

The Global Mask team is on hand to study, analyse and design your ideal protection mask:

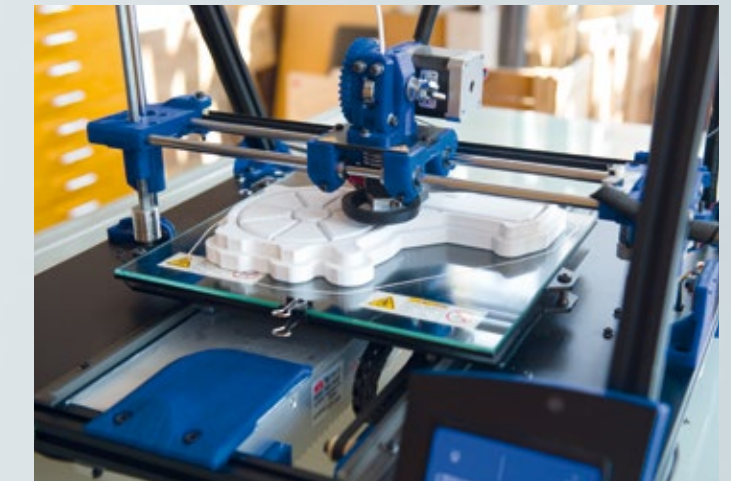
- Request a free no-obligation project
- Direct feedback with the team of designers
- Delivery of prototypes for you to check (before production)
- Flexible delivery times for masks produced



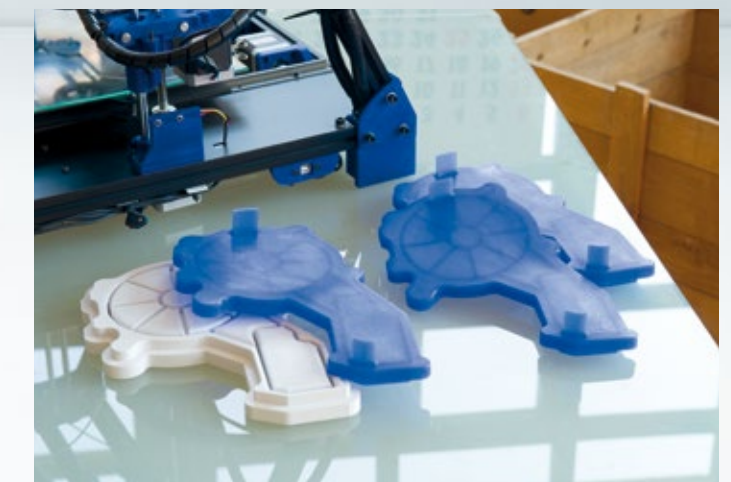
Study of the type of mask to be created



Optimum solution design



3D first checking



Production of the finished part

Contact our design team now:
info@global-mask.com